

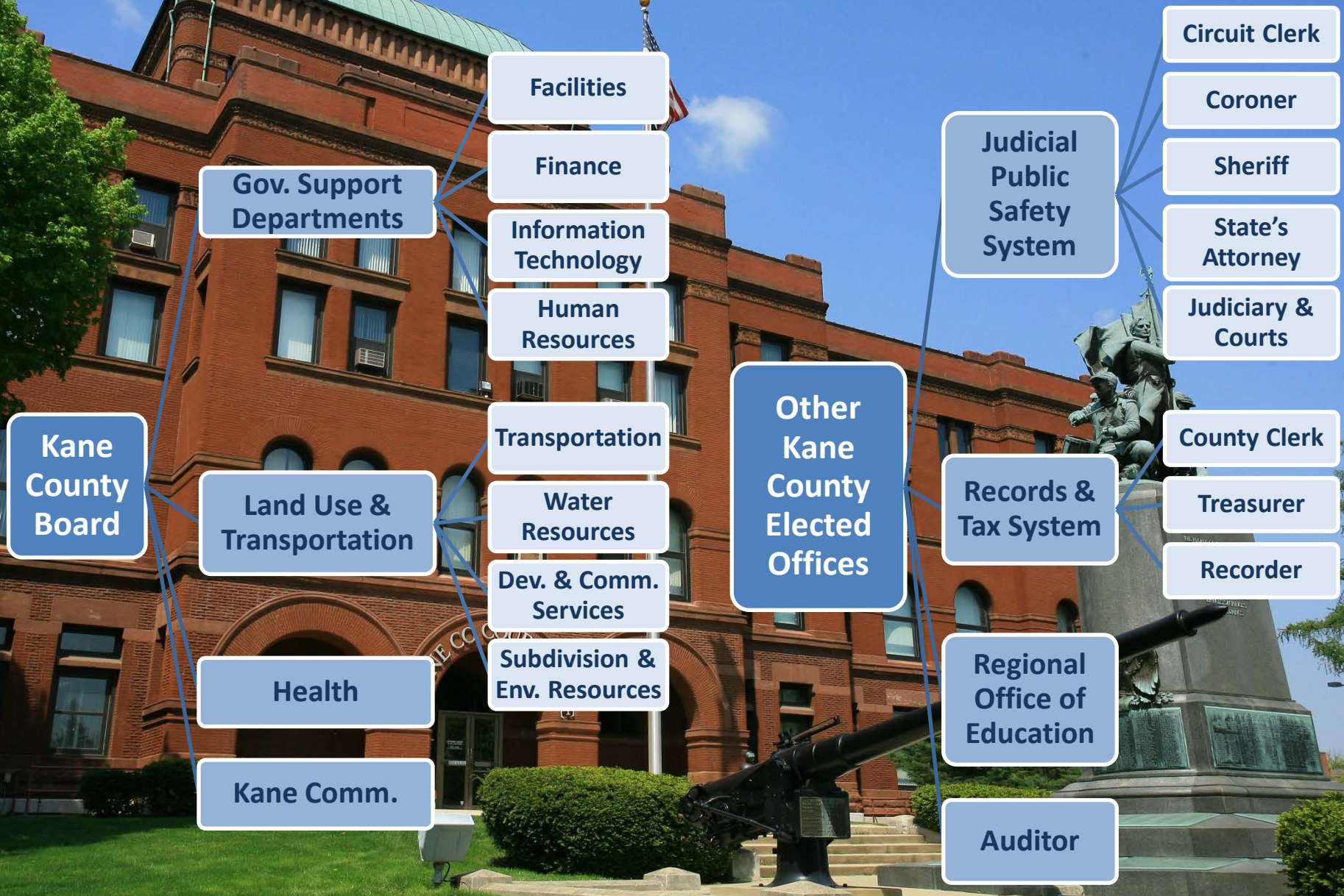
State of the County

Kane County Board Committee of the Whole

May 22, 2012



Kane County Government Organization





The State of Kane County

Fiscally Strong
Efficient
Transparent
Committed



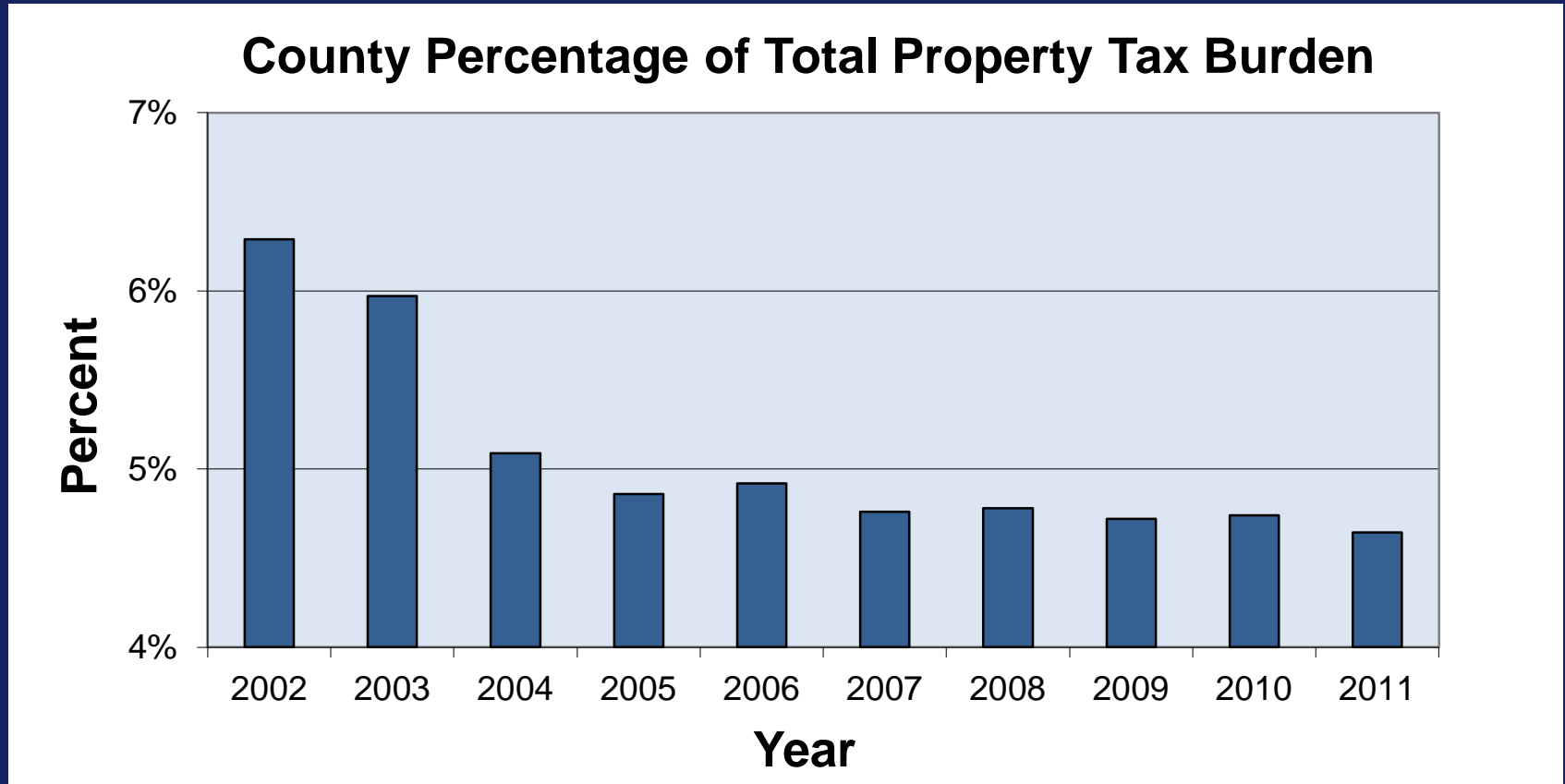
Financial Accountability

- ↓ Reduced Budget
- ↓ Reduced Headcount
- ↓ Reduced % of Tax Burden
- Low Debt
- ↑ Increased Financial Ratings
- ↑ Increased Financial Strength
- ↑ Increased Efficiency



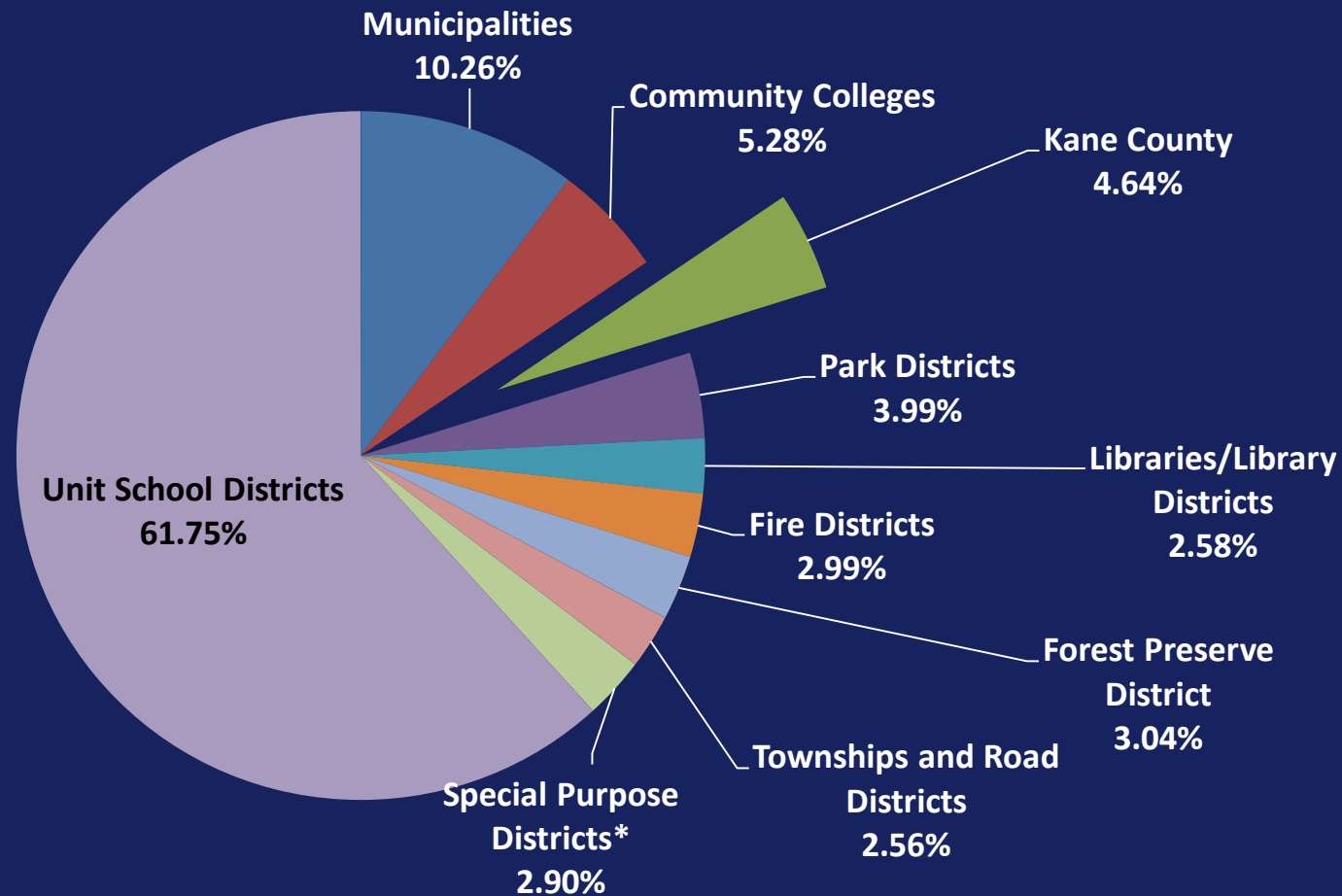
***Awarded Certificate of Excellence
in Financial Reporting Award
(For the 14th time)***

County Receives only a Small Portion of Total Property Taxes



Source : Kane County Clerk

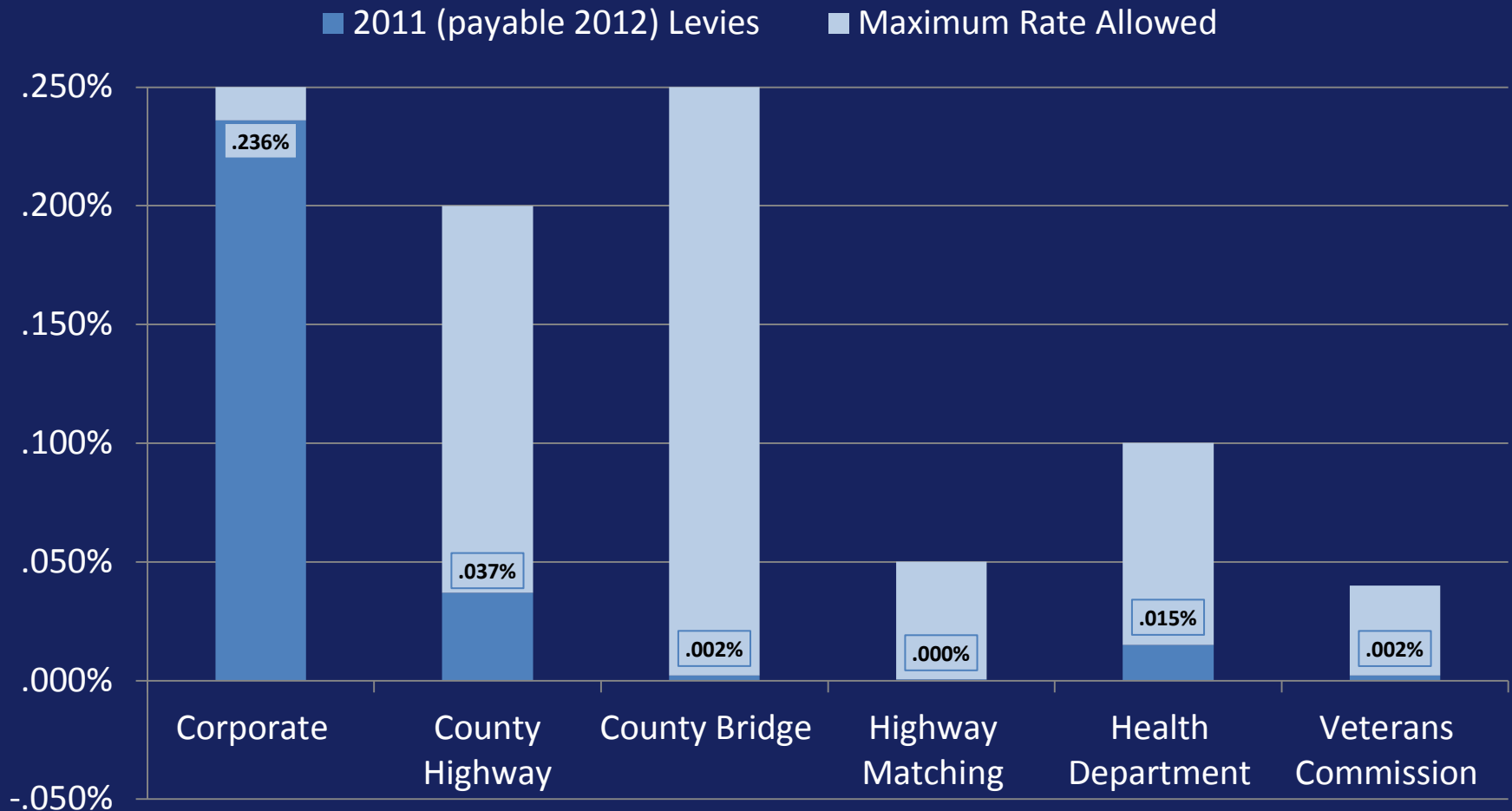
2011 (payable 2012) Kane County Property Tax Levies



*Conservancy Districts, Cemetery Districts, Sanitary Districts, Special Service Areas, and TIF Districts

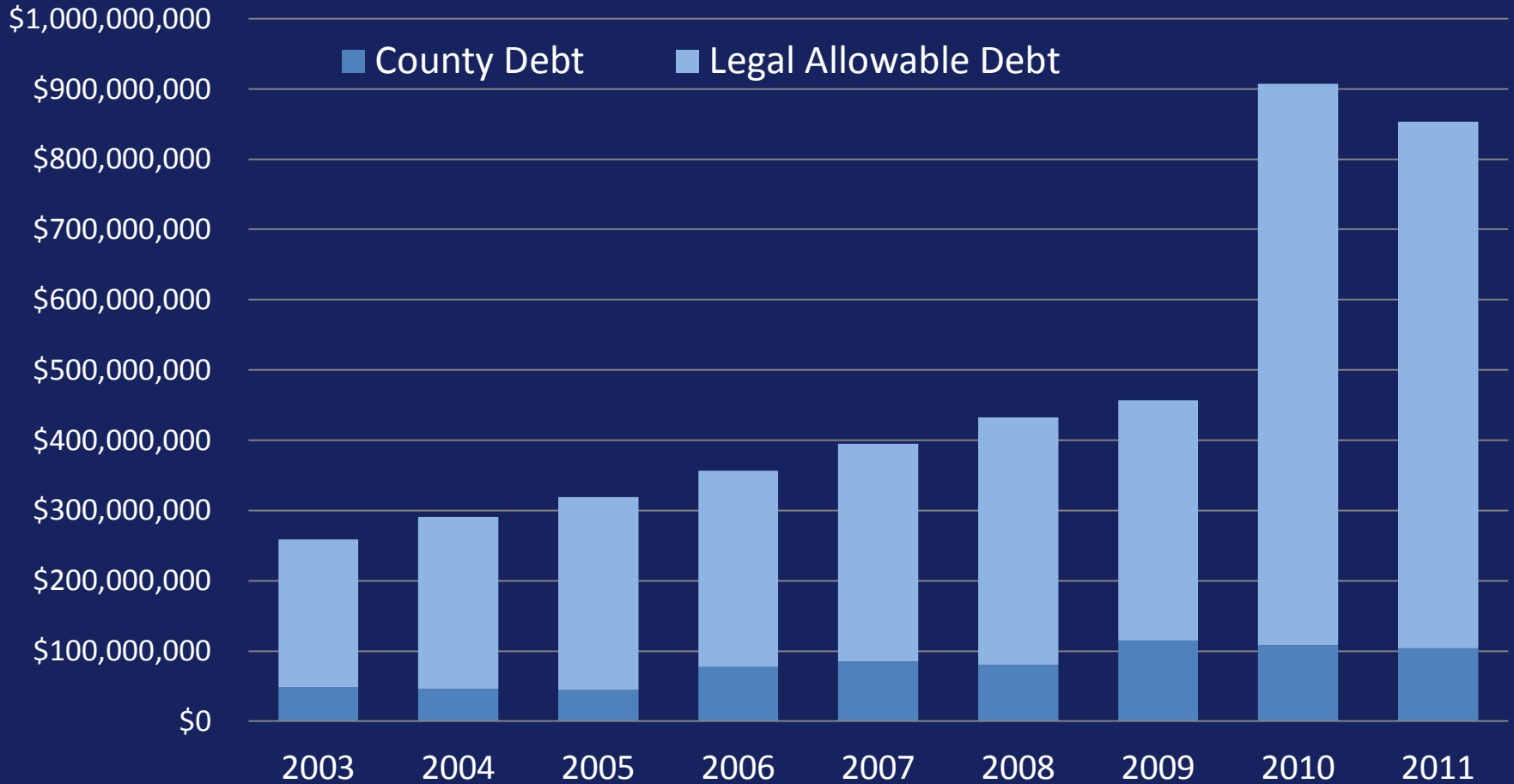
Source: Kane County Clerk

Kane County levies for funds that have maximum rate limits in state law are 65% below those limits.



Source : Kane County Clerk

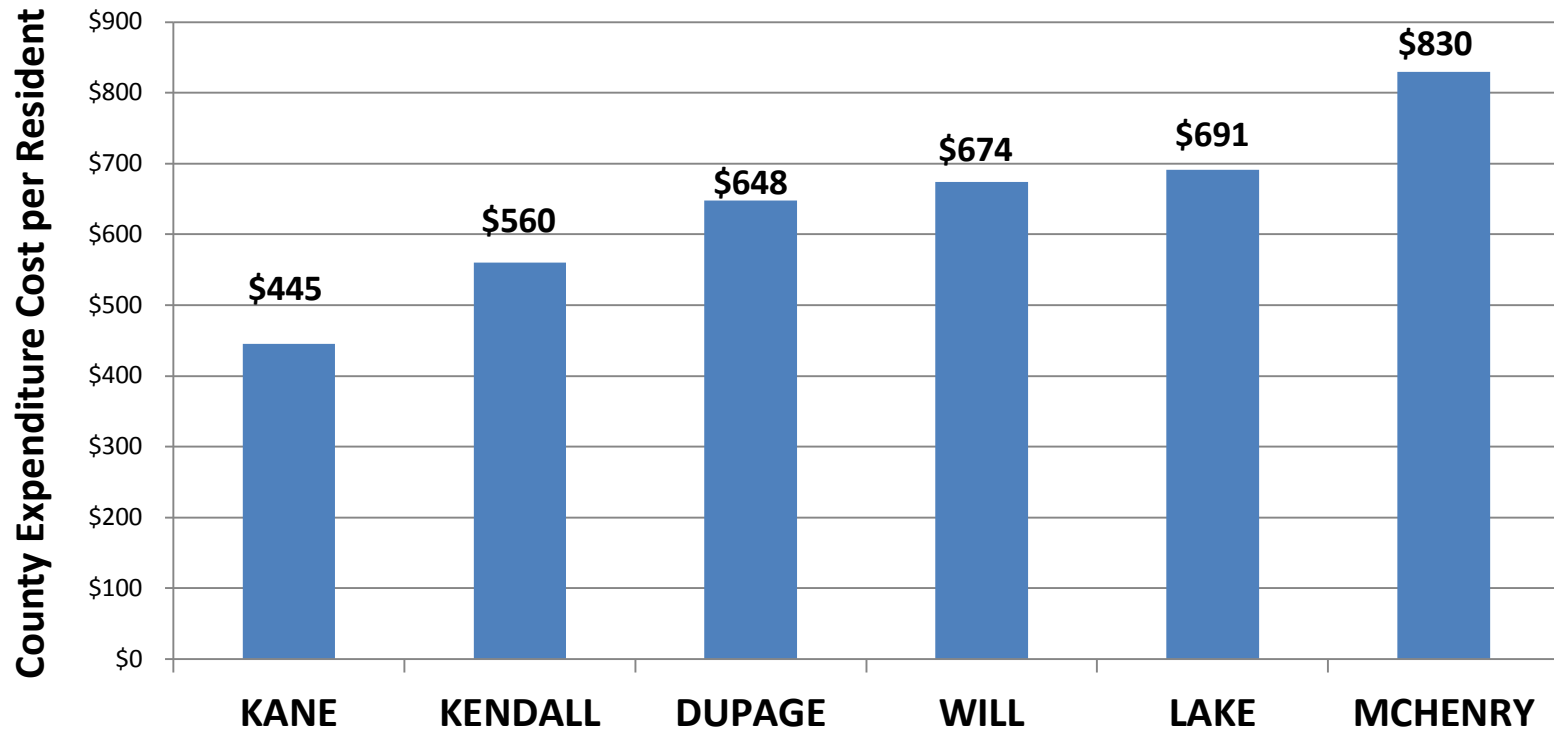
Kane County Debt Well Below Allowable Debt



Source : Kane County Comprehensive Annual Financial Report (CAFR)

The Cost of County Government

**Total County Government Expenditure Cost
Per Resident***



Source : *Current Published County Budgets as of May 22, 2012 and 2011 Census population estimates
(includes expenditures and all County funds)
(Includes all revenue streams i.e.. income tax, property tax, sales tax and state and federal reimbursements)

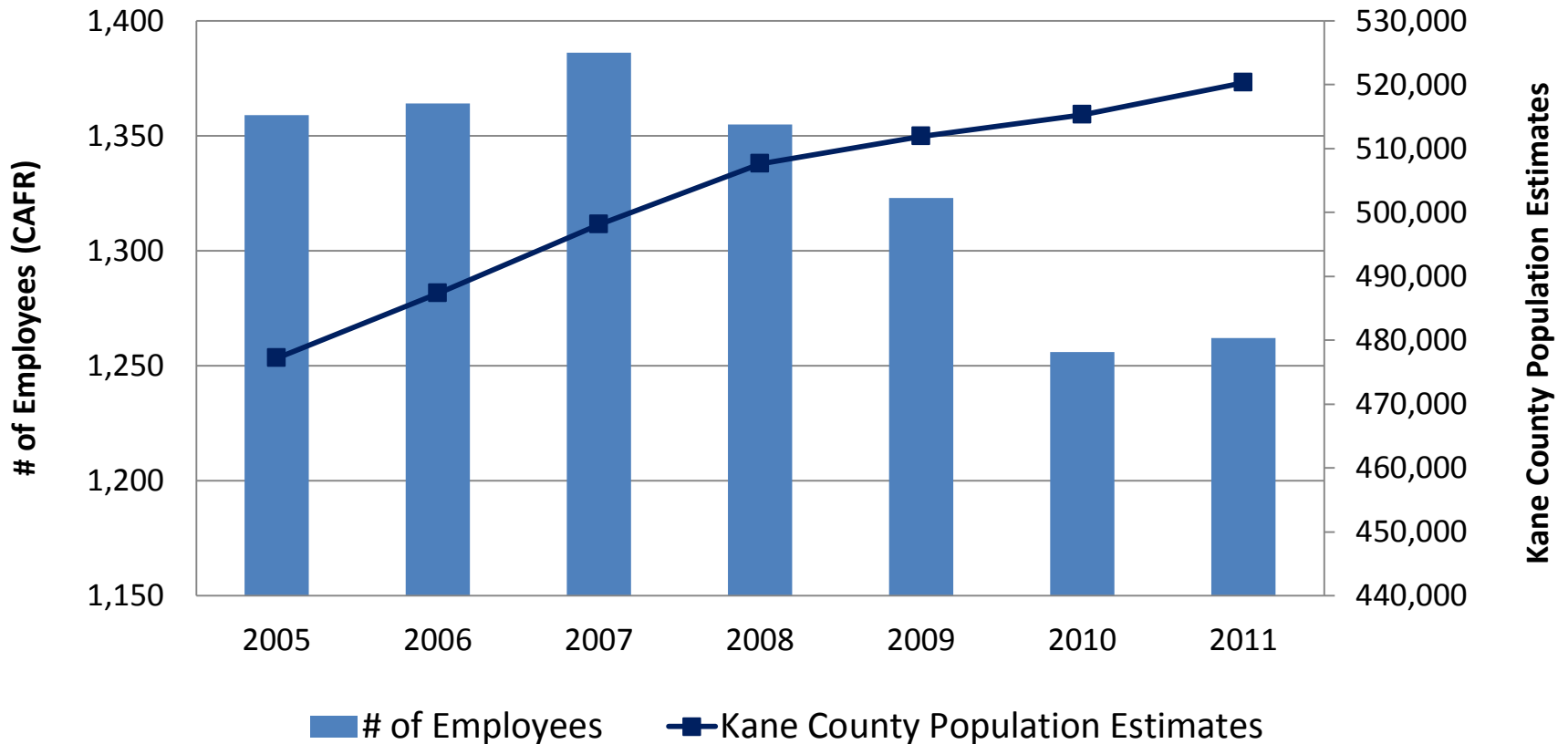
Bond Ratings have Increased

- Kane County's *Standard and Poor's* rating increased from AA to **AA+** in 2009
- Kane County's *Moody's* rating increased from Aa2 to **Aa1** in 2010



Kane County Employee Headcount

(includes departments and elected offices)



Source: Kane County Comprehensive Annual Financial Report (CAFR) and U.S. Census Bureau



Kane County Ranked #1

Among the 27 northernmost Counties
In Illinois Policy Institute Local Transparency Project Audit



Kane County Website

Rates "A+" for Transparency



Ranked among the best in Illinois for its transparency & proactive disclosure by Sunshine Review.
(A non-profit wiki site that monitors and evaluates government information efforts nationally.)



Kane County

Nationally Recognized

For its Procurement Process

1 of 7 National QBS (Qualification Based Selection) Merit Award Winners



The American Council of Engineering Companies
&
National Society of Professional Engineers

Municipal/County Coordination: Animal Control



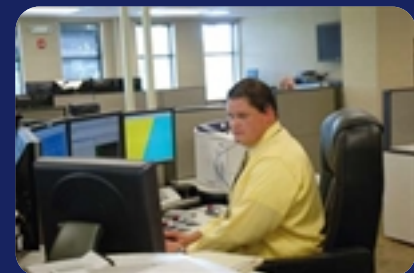
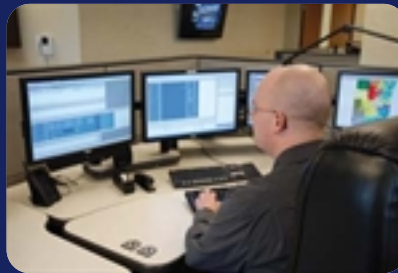
- New Kane County Animal Control Shelter
- Services contracts with more than twenty municipalities
- More than 75% of the animals are reunited, rescued or adopted

Municipal/County Coordination: KaneComm



Kane County Emergency Communications:

- Deploys 17 Police, Fire, and Medical agencies located within Kane County
- Responsible for incoming emergency & non emergency calls for assistance from citizens residing in multiple jurisdictions



Municipal/County Collaboration Fiber Optic – Technical Advantage



- Multi-Million dollar County investment
- Communication investment in our communities
- Supports Advanced Traffic Management System
- Supports business and development
- Physical connection to all emergency response centers in Kane County
 - working on agreements, splicing, termination & routing



Stearns Road Bridge Corridor

EMINENT CONCEPTOR AWARD

Top Honor for Engineering Excellence
American Council of Engineering Companies of Illinois



Recognized for engineering achievement which demonstrates a high degree of merit and ingenuity, contributes to the advancement of the private practice of engineering, and enhances the economic and social welfare of the general public.

Community Investment

(No County funds used for these programs)

Federally Funded Programs - affordable housing & community development projects

- \$47 Million since program inception (1998) - additional \$94 M leveraged from other sources
- \$34 Million since December 2004 – additional \$80 M leveraged from other sources
 - Establishment of OCR resulted in greater funding opportunities
- \$6.5 Million in 2011

Kane County Riverboat Program - educational, environmental & economic development projects

(Grand Victoria Foundation Funds)

- \$132.7 Million since program inception (1997)
- \$45.8 Million since December 2004
- \$1.2 Million in 2011



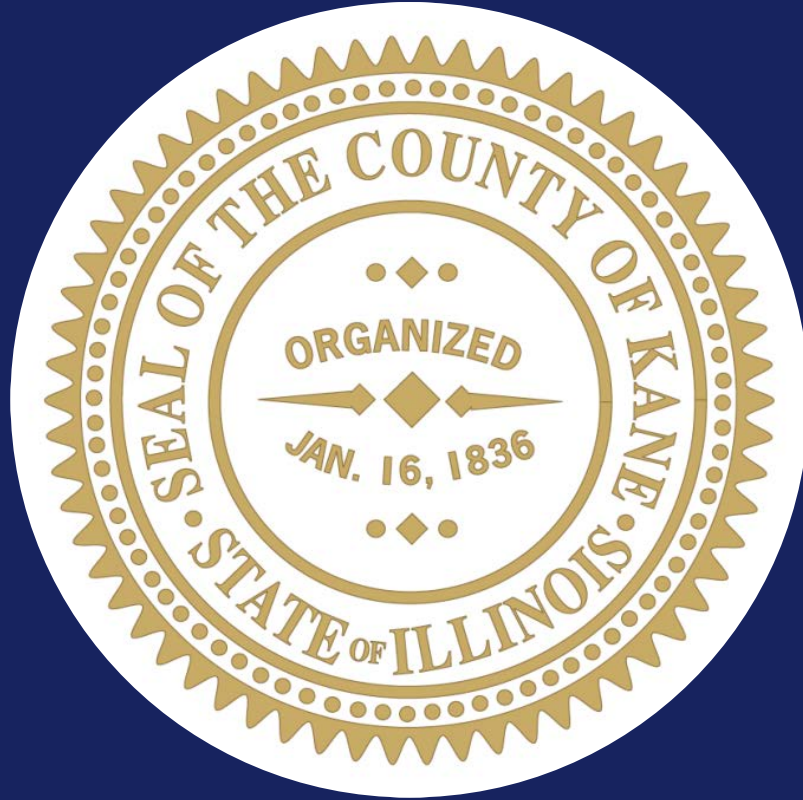


Notable Community Accomplishment:

Northern Illinois Food Bank
Construction of new
distribution center

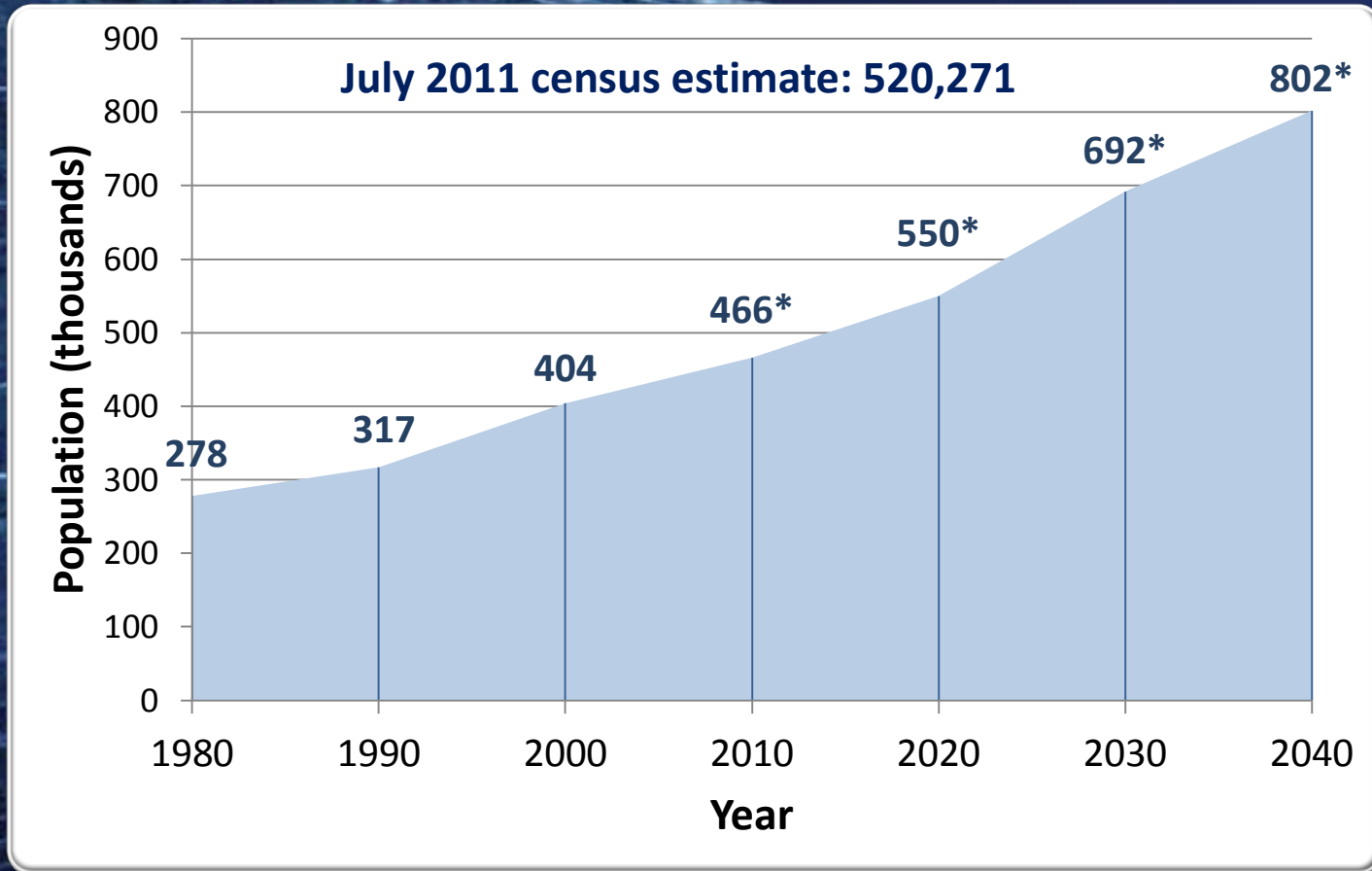
Partially funded by Kane
County Board through
Riverboat and Community
Development Funding





Kane County Population Growth

2040 CMAP Population Forecast for Kane County: 802,231



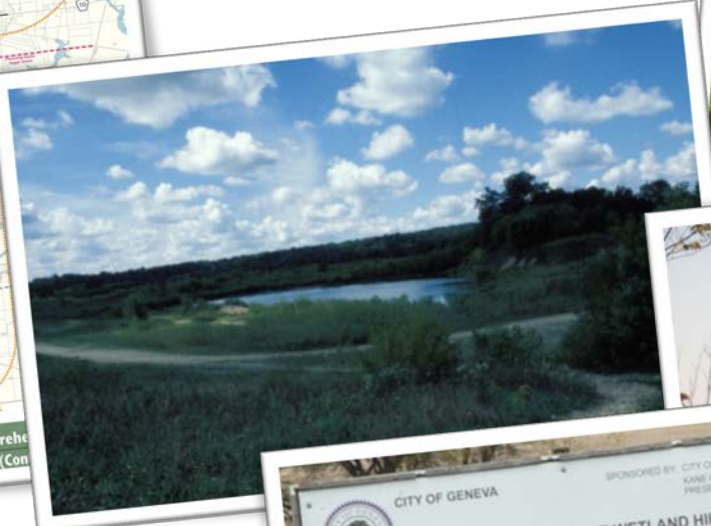
*Population forecasts



Kane County: A History Rich in Planning



A History, and continued vision of County/Municipal Cooperation: Land Use, Open Space and Trails



CITY OF GENEVA SPONSORED BY CITY OF GENEVA
KANE COUNTY FOREST
PRESERVE DISTRICT

PRAIRIE GREEN PRESERVE WETLAND HIKING TRAIL

DESCRIPTION: CONSTRUCTION OF A TABLE GRUNDED LIVINGSTONE TRAIL, 30-SPACE PARKING LOT AND ACCESS DRIVE.

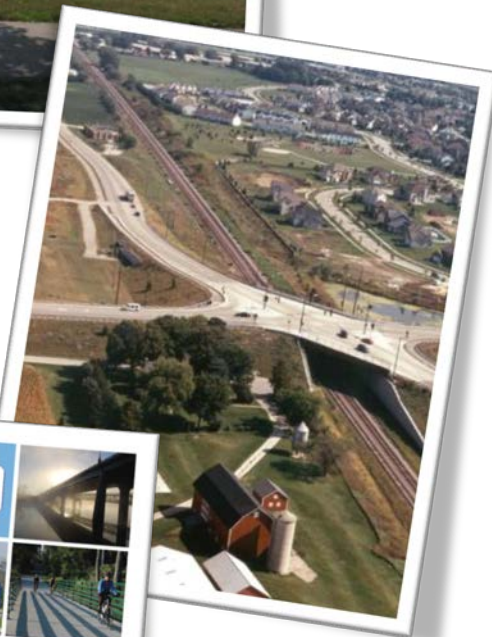
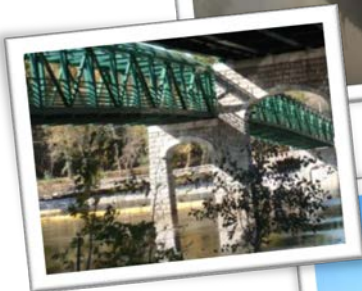
FUNDING ASSISTANCE: THIS TRAIL FACILITY RECEIVED FUNDING ASSISTANCE THROUGH THE FEDERALLY FUNDED RECREATIONAL TRAILS PROGRAM ADMINISTERED BY THE ILLINOIS DEPARTMENT OF NATURAL RESOURCES.

BENEFITS OF THE PRAIRIE GREEN PRESERVE:

- ESTABLISHES A LARGE PUBLICLY OWNED OPEN SPACE
- RESTORES AGRICULTURAL LAND TO PRAIRIE RECREATION AND NATIVE VEGETATION
- CREATES OPPORTUNITIES FOR PASSIVE RECREATION & LEARNING
- ENHANCES SURFACE WATER QUALITY
- RESTORES WILDLIFE HABITAT

FOR MORE INFORMATION CALL 630-233-0818

A History of Infrastructure Implementation through Vision, Planning and Cooperation



2040 Plan

The vision for Kane County



Quality of Kane

Healthy People, Healthy Living,
Healthy Communities

-Its about Quality of Life



2040 Challenges



Water Supply



Mobility & Connectivity

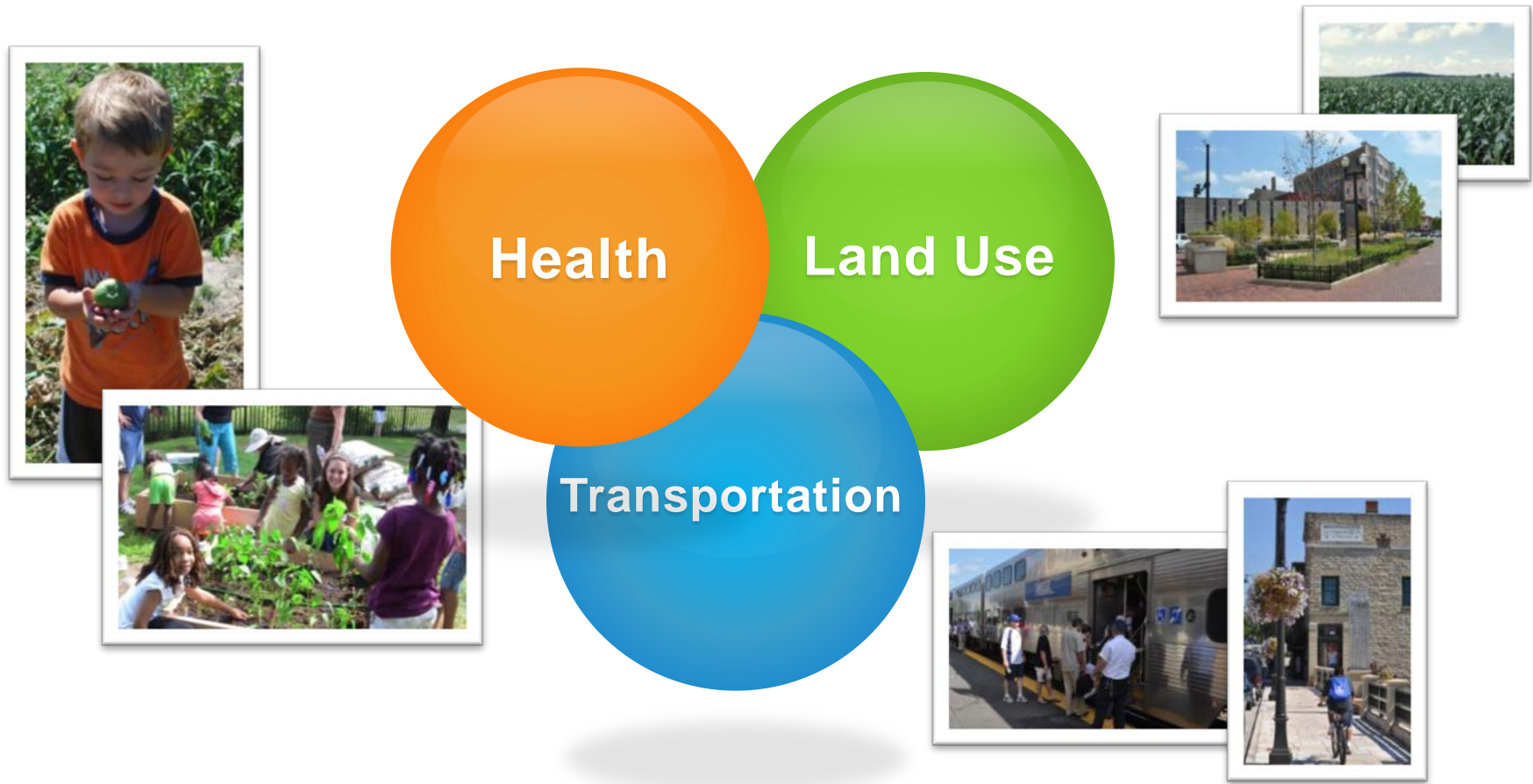


Safe, Affordable & Diverse Housing



Healthy Population

How can we meet these challenges?



By integrating the 3 disciplines



QUALITY OF KANE

Healthy People, Healthy Living, Healthy Communities

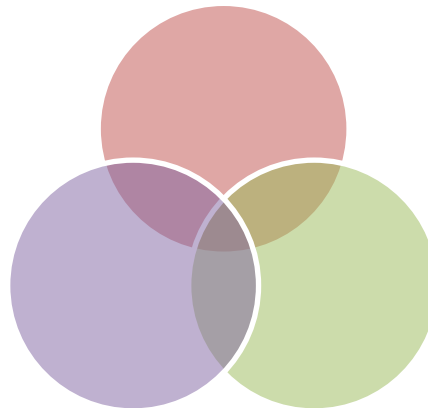
Community Health & Reinvestment

- Fit Kids 2020 Plan
- 2011 Comprehensive Community Health Assessment
- 2012-2016 Community Health Action Plan



Transportation

- 2040 Transportation Plan
- Bicycle/Pedestrian Plan
- 2040 Transit Plan
- IL 47 Corridor Planning Study
- Bus Rapid Transit Study
- Route 529 Study



Land Use

- 2040 Conceptual Land Use Strategy
- IL 47 Corridor Planning Study
- Energy Plan
- Water Resources
- Farmland Preservation and Local Foods
- Local Planning Coordination/ Assistance



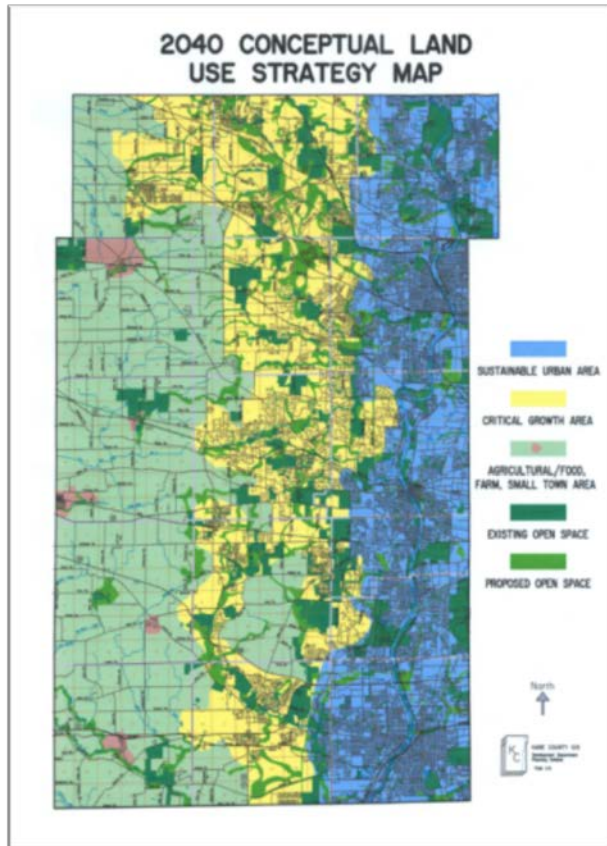
Community Investment

2040 Land Use Plan

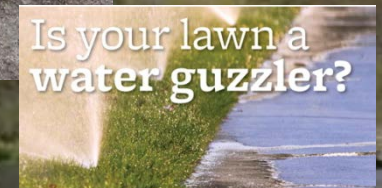
- Sustainable Urban Area
- Critical Growth Area
- Agricultural/Food, Farm, and Small Town Area

Defining Land Use Strategy

Keep 50% of Kane County land as agriculture or open space



NW Water Planning Alliance & Sustainable Water Supply



Help use our resource efficiently.

Did you know...
The U.S. Supreme Court limits the Illinois diversion of Lake Michigan water? This amount will not increase but our population will. Currently Lake Michigan provides water to over half of Illinois' population, around 7 million people.

You can help by...
Installing a WaterSense high efficiency toilet, costing the same as a conventional toilet and reducing water use by 20%.

Thanks for doing your part to help ensure that our community and water have a clean and reliable water supply now and for the future generations.

For more information, visit www.epa.gov/WaterSense

2015

Focus on:

- Water conservation and drought planning
- Public Education Initiative for Water Conservation
- Model Water Conservation Ordinance
- Recommendations on Illinois State Plumbing Code Revisions
- WaterSense Partnerships with USEPA by all NWPA Members



Kane County 2030 Vision:

Kane County residents
are the *healthiest in Illinois*





“Health is created in communities. Kane County’s focus on planning for health in the places we live, work and play is exemplary and shows the way we should be moving forward to prevent disease and achieve wellness.”

-Dr. Richard Jackson, author, [Designing Healthy Communities](#)

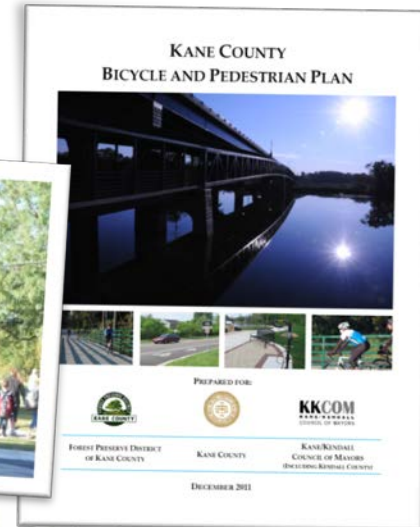


Community Health Plan Priorities

1. Support health behaviors that promote well-being & prevent disease
2. Increase access to high quality, holistic preventative & treatment services across the health care system
3. Support & create health promoting neighborhoods, towns and cities
4. Promote social, economic & educational environments that optimize health



2040 Transportation Vision: Mobility and Connectivity



Current Infrastructure Improvements



Orchard Road (South of Jericho Rd to North of US 30)

- Construction underway – est. completion fall 2012
- Construction Phase ~ \$9.3M

I-90 at IL 47 (completion of a full interchange)

- Construction awarded – estimated completion summer 2013
- Construction Phase ~ \$35.7M (received extremely favorable bid)



Current Infrastructure Improvements

Stearns Road Project (Add lanes on IL 25 from Dunham Rd to south of Stearns)

- Land acquisition and E2 continue
- Fall 2012 / winter 2013 (depending on ROW acquisition)
- Current Stage ~ \$16.5 M (\$163 M total project cost)

Anderson Road Extension & Grade Separation (Keslinger to south of IL 38)

- Land acquisition continues
- Target letting August 2012 (depending on ROW acquisition)
- \$24M for remaining Construction & E3 phases

